



RIVIERA™ Mobile Homes

1

UNMATCHED  
MANUFACTURER IN THE  
WORLD

---

25

UNIQUE  
HOUSE  
MODELS

---

50

COMPLEMENTARY  
ELEMENTS

---



# Comprehensive Solutions.

We are The only manufacturer of holiday and mobile homes offering a modular system tailored for resorts. Our range includes fully furnished residential homes with furniture we produce in-house, as well as restaurant and retail modules, administrative units, and innovative, modernly designed modules such as playground houses, gaming pods, and spa & recreational cabins.

To complement our offerings, we also provide small architectural elements, including sun loungers, chairs, tables, sofas, and other outdoor furniture to meet all your resort needs.



# Beauty on the Outside.

Our homes are designed with meticulous attention to detail. The RIVIERA line is distinguished by its stunning arched windows and Mediterranean-inspired façade, which our clients can customize with natural stone or wooden cladding for an elegant and timeless look.



# Beauty on the Inside.

---

Thoughtfully planned and modern, with a focus on every detail. Quality and design speak for themselves, offering interiors that are as functional as they are stylish.



# Construction of Our Buildings.

The RIVIERA line features year-round, eco-friendly homes designed to withstand even the most demanding commercial conditions. The walls are crafted from SIP composite panels with dual 15 mm MFP boards and an 8 cm XPS core. The structure is reinforced with 80x160 mm KVH construction timber for enhanced durability. The façade is finished with adhesive on mesh and decorative plaster. Upon request, we offer additional options, such as decorative trowel-textured plasters, wall claddings made of thermo-treated wood, or even natural stone finishes. The signature arched windows of the RIVIERA line are crafted from premium PVC profiles and equipped with triple-glazed units, combining beauty with energy efficiency.



## Several Installation Options

---

Our homes can be installed on slabs, point foundations, or even on mobile trailers, which are also available as part of our product offering.



# Construction of Our Buildings.

The RIVIERA line features year-round, eco-friendly homes designed to withstand even the most demanding commercial conditions.

The walls are crafted from SIP composite panels with dual 15 mm MFP boards and an 8 cm XPS core. The structure is reinforced with 80x160 mm KVH construction timber for enhanced durability. The façade is finished with adhesive on mesh and decorative plaster. Upon request, we offer additional options, such as decorative trowel-textured plasters, wall claddings made of thermo-treated wood, or even natural stone finishes.

The signature arched windows of the RIVIERA line are crafted from premium PVC profiles and equipped with triple-glazed units, combining beauty with energy efficiency.

Our homes can be installed on slabs, point foundations, or even on mobile trailers, which are also available as part of our product offering.

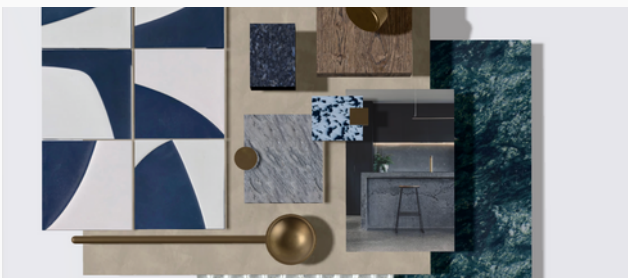


# Choose Your Interior Design

We offer four color packages, allowing our homes to be perfectly tailored to local architectural styles and personal color preferences.

RIVIERA represents comprehensive and innovative solutions for all operators of holiday resorts, campgrounds, or even individual customers.

Our company has its own design department that adapts home designs to meet the unique requirements of each client.



**CRETE**



**COTE TE AZURE**



**CAPRI**



**MARBELLA**



# RIVIERA House - M3

The Model M3 consists of three modules. The central module features a small kitchenette, a fold-out sofa, a TV cabinet, and a television. On both sides of the central module, you'll find two bedrooms: a master bedroom and a twin bedroom. However, our clients have complete freedom to configure the modules as they wish, transforming our modular homes into a set of "building blocks" they can arrange according to their personal preferences.



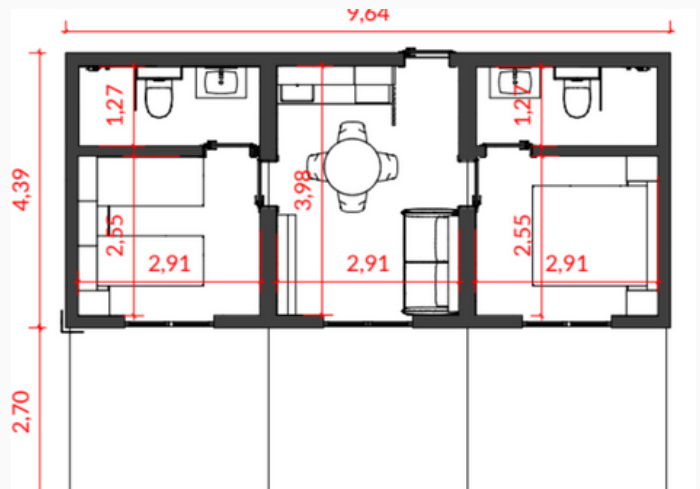
## Jakość w każdym detalu

---

Our homes are crafted with high-quality finishes, including durable vinyl flooring, commercial-grade wallpaper, and robust furniture designed to withstand daily use while maintaining style and comfort.

# Thoughtfully Designed

Our homes are designed with an excellent room layout, ensuring maximum functionality and comfort. Thoughtfully planned furniture solutions provide ample storage options, allowing guests to conveniently store their belongings during their stay.



## Cozy Seating and Dining Area

The living room offers a comfortable sofa, a round dining table, and four stylish chairs, creating a welcoming space for relaxation and meals.



## Practical Storage and Kitchen Space

On the other side, the room features an RTV cabinet with shelves for storage and display, complemented by a well-designed kitchenette for all your culinary needs.



## TWIN BEDROOM

The twin bedroom includes two single beds, thoughtfully arranged for comfort and functionality. The room is complemented by practical storage cabinets, ensuring plenty of space to keep belongings neatly organized.



## BEDROOM - MASTER

The master bedroom features a comfortable double bed, perfectly complemented by spacious wardrobes designed to provide ample storage while maintaining a clean and organized look.





# RIVIERA House - M4

The M4 module is thoughtfully designed with an excellent room layout, featuring two comfortable bedrooms and an expanded living room composed of two connected modules. This larger living space provides additional comfort and functionality, while smartly designed furniture solutions offer generous storage, ensuring guests can conveniently organize their belongings during their stay.



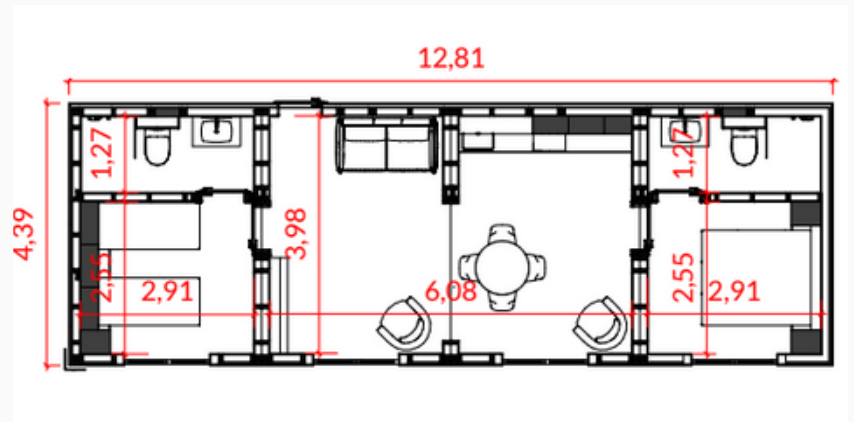
## A Spacious and Prestigious Living Room

---

The expanded living room in the M4 module exudes prestige and comfort, offering a spacious area perfect for relaxation and socializing.

# M4 Module Layout

The M4 module presents a well-planned layout, offering two cozy bedrooms and an impressive expanded living room composed of two seamlessly connected modules. The spacious living area enhances comfort and flexibility, ideal for both relaxation and entertainment.



## Cozy & Large Seating Area

This spacious living room offers a comfortable, welcoming space for relaxation. Featuring plush seating, it's perfect for both casual gatherings and quiet moments.



## Dining area in the M4 module

The standalone dining area in the M4 module offers a dedicated space for enjoying meals in comfort. With a well-positioned dining table and comfortable chairs.



## TWIN BEDROOM

The twin bedroom includes two single beds, thoughtfully arranged for comfort and functionality. The room is complemented by practical storage cabinets, ensuring plenty of space to keep belongings neatly organized.



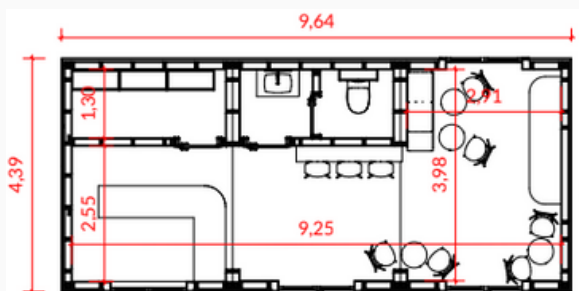
## MASTER BEDROOM

The master bedroom features a comfortable double bed, perfectly complemented by spacious wardrobes designed to provide ample storage while maintaining a clean and organized look.



# RIVIERA Shops & Restaurants

Our restaurant and retail modules are designed with versatility and functionality in mind, offering a perfect solution for a variety of commercial needs. These modules are tailored to meet the demands of busy environments, providing optimized space for both customer interaction and storage.



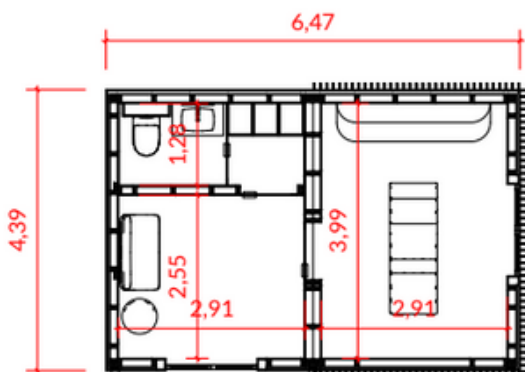
## High-quality finishes

Each module features high-quality finishes, including durable flooring, moisture-resistant wall coverings, and modern lighting solutions. The flexible design allows for easy customization, whether you're looking to create a trendy retail shop, a comfortable restaurant, or a dynamic food court.



# RIVIERA SPA & Retreat

Our SPA and retreat modules are designed to offer an oasis of relaxation and wellness in any environment. These modular buildings are perfect for creating luxurious wellness spaces, whether for a private retreat, resort, or spa center.



## Modular & Flexibility

Whether you are looking to create a small, intimate retreat or a larger spa complex, our SPA and retreat modules offer the flexibility and luxury you need to create the perfect space.



# RIVIERA Sport & Fun

Our modules for children and youth are designed to provide a fun and engaging environment for different age groups, offering a variety of spaces for play, learning, and recreation. These modules are perfect for creating dynamic and interactive spaces in resorts, parks, or private facilities.



**From the first year of  
life to adolescence.**

---

Our modules are thoughtfully designed to cater to different age groups, ensuring each space is engaging and appropriate for the developmental needs of the users.

## **Your representative in Croatia:**

Orlando Lopac  
orlando.lopac@atepaa.com  
+385 98 450424

**Your plan, our product,  
your clients' dreams fulfilled.**

ul. Wędrowców 112, 43-300 Bielsko-Biała, Poland  
buildings@atepaa.com  
www.atepaa.com  
www.buidlings.atepaa.com